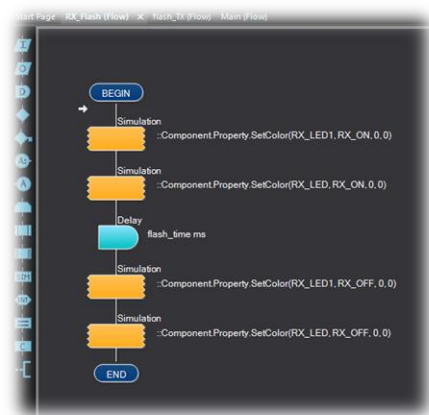
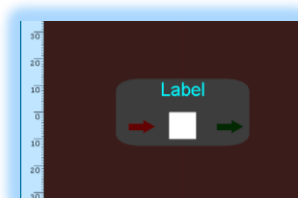


FLOWCODE 8

Component Creation Getting Started



Build & Design your own Components



Before you begin to build your own FC8/7 components, I would suggest you create two folders as follows:

- 1- One folder to store your Component projects



FC8 Component Creation

- 2- The second folder to store your component library



FC8 New Components

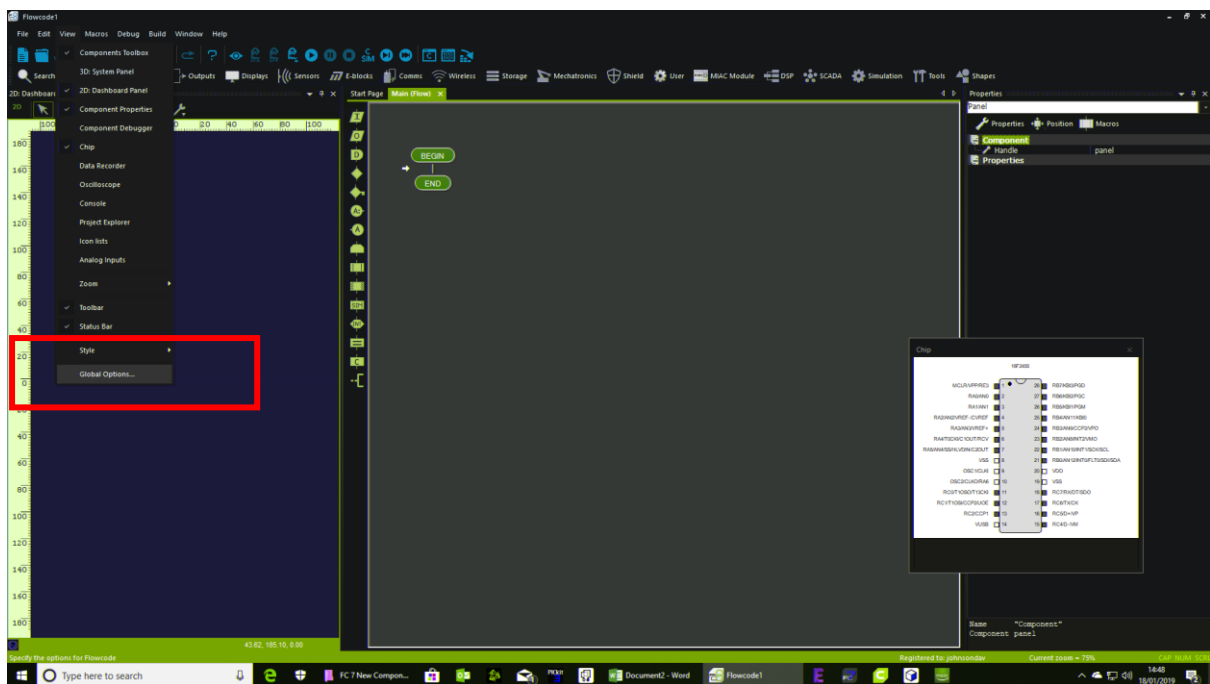
- 3- Next, download the following component: **Simple_Flasher.fcp**

- 4- Place this file in the folder FC8 New Components

To **Set-Up** FC8 to access the new component library you have created:

Open FC8 and start a new project. It does not matter which controller you use, all we are going to do is to ensure FC8 is able to access your new component creations library. This first component (*COM_Flasher.fcp*) is used to ensure FC8 starts using the new component folder library. If you leave the folder empty, you will not be able to see it from within FC8.

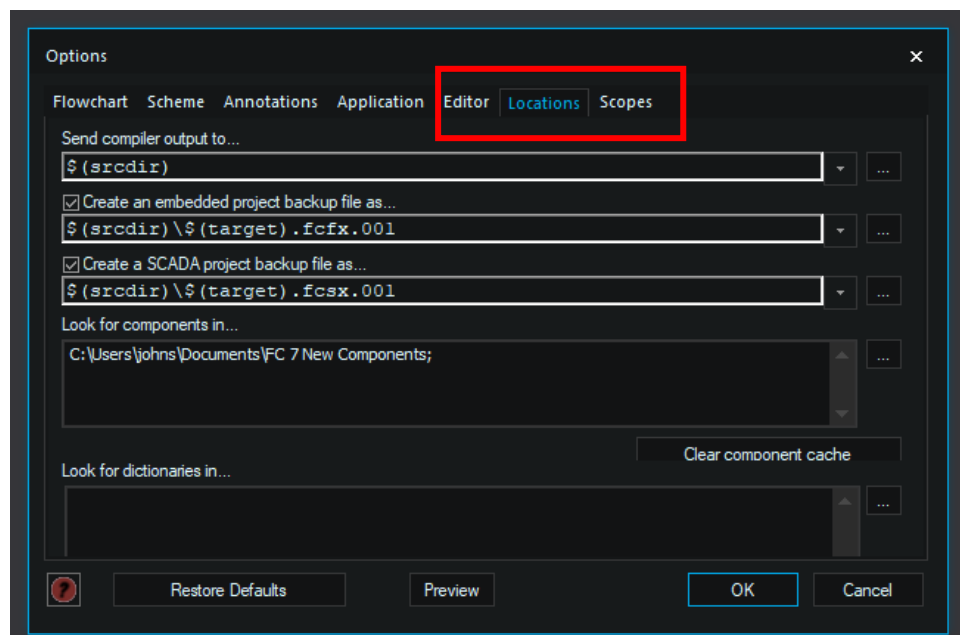
Select - **View**
 Global Options



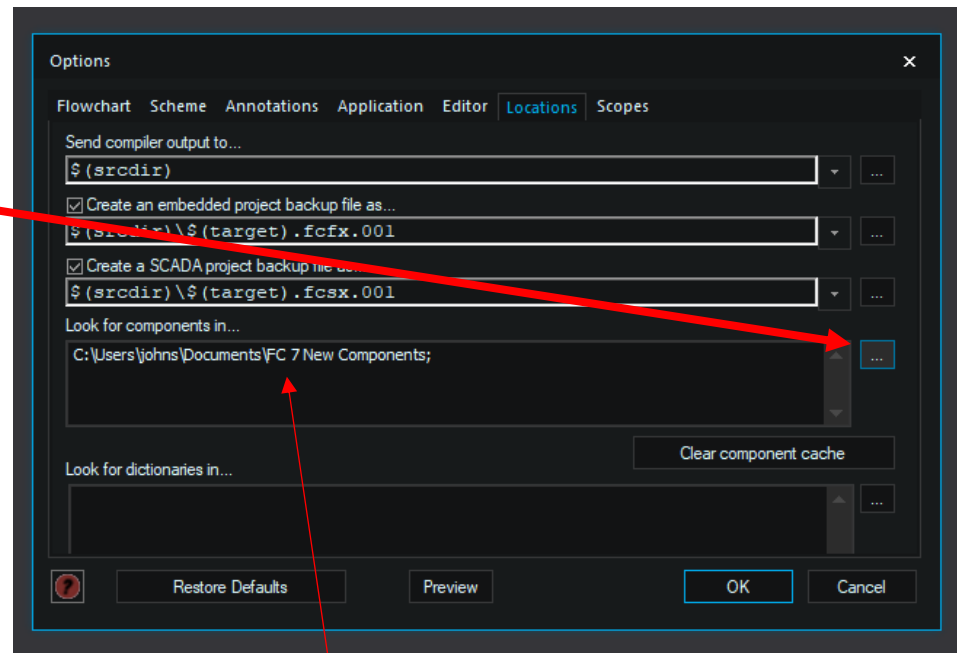
Next

Select:

Locations



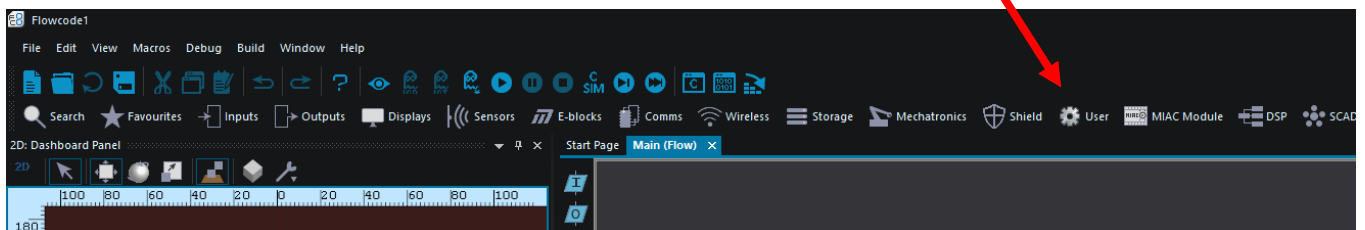
Click this box here:



The location of the library will appear here:

Navigate to the folder you are using for your component library. My library is from FC7 and is use by both flowcode systems:- Flowcode 7 & 8

Restart FC8. If all is well, you will see your component library here:



As you begin to add new components, they will appear as shown. They will have an icon of a spanner and hammer, which indicates they are under development. You have full control of this feature.

