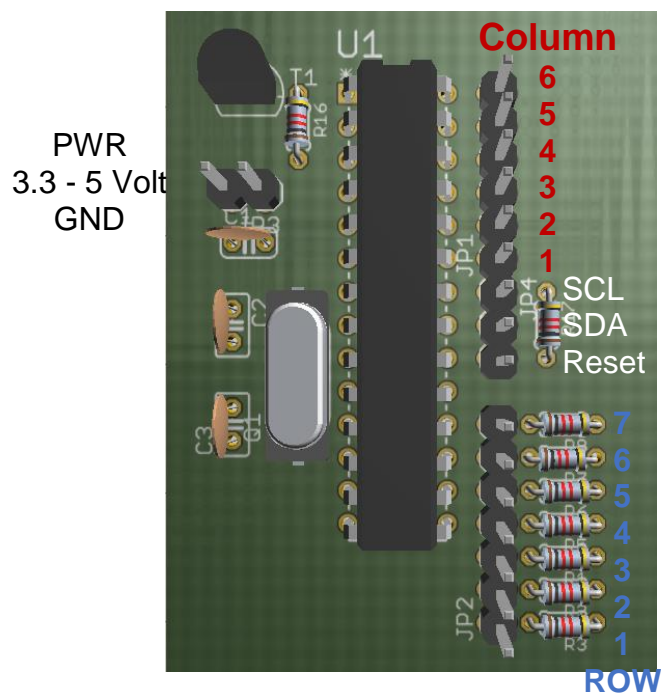
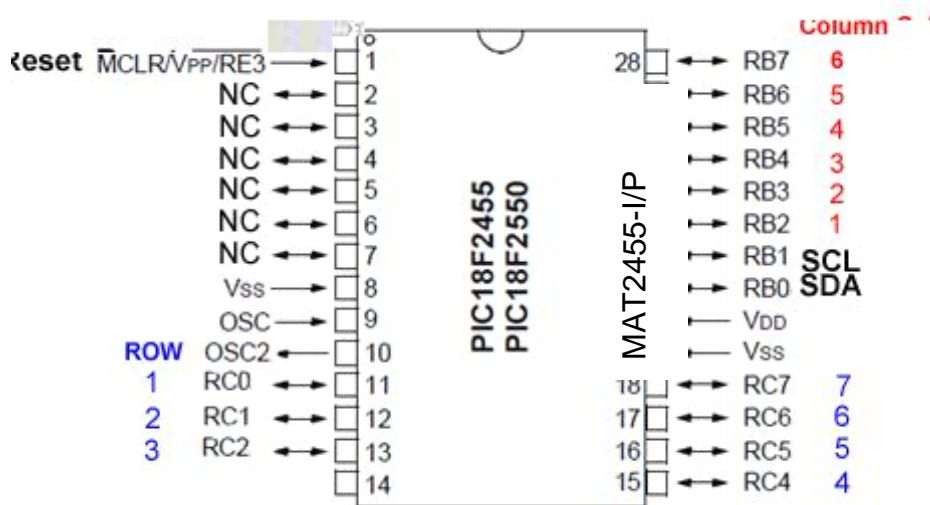


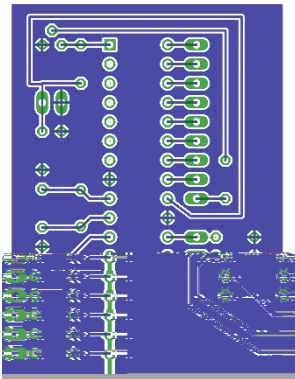
Keyboard Controller MAT2455-I/P

Features

- Compatible with Most Microcontrollers
- Flash/Data EEPROM Retention: > 40 Years
- Wide Operating Voltage Range (2.0V to 5.5V)
- I2C interface + Clock Stretching
- 16Mhz operation
- 100kHz – 400kHz data transfer
- POL time <5ms



PCB Layout



As looking through the PCB

PIC18F2455 Configuration Bits

Choose a Target Project description General Options Configure			
<input checked="" type="checkbox"/> Write config on download			
Name	Size	Value	
0x1	UINT	0xfeeb	
..... USB Clock Selection	Bit 5	clk src from 96MHz PLL/2	
..... CPU Sys CLK Select	Bit 3-4	OSC/2 or PLL/3	
..... OSC Select	Bit 0-2	div by 4 {16MHz input}	
..... Oscillator	Bit 8-11	HS: HS+PLL, USB-HS	
..... Fail-Safe Clock Monit...	Bit 14	Enabled	
..... Internal External Swi...	Bit 15	Enabled	
0x2	UINT	0xfef7	
..... USB Voltage Regulator	Bit 21	Enabled	
..... Power Up Timer	Bit 16	Disabled	
..... Brown Out Detect	Bit 17-18	Enabled in hardware, SBOREN disabled	
..... Brown Out Voltage	Bit 19-20	2.7V	
..... Watchdog Timer	Bit 24	Disabled-Controlled by SWDTEN bit	
..... Watchdog Postscaler	Bit 25-28	1:32768	
0x3	UINT	0xfdf	
..... CCP2 Mux	Bit 40	RC1	
..... PortB A/D Enable	Bit 41	PORTB<4:0> configured as digital I/O on RESET	
..... Low Power Timer1 ...	Bit 42	Enabled	
..... Master Clear Enable	Bit 47	MCLR Enabled, RE3 Disabled	
0x4	UINT	0xff9b	
..... Stack Overflow Reset	Bit 48	Enabled	
..... Low Voltage Program	Bit 50	Disabled	
..... Dedicated In-Circuit ...	Bit 53	Disabled	
..... Extended CPU Enable	Bit 54	Disabled	
..... Background Debug	Bit 55	Disabled	
0x5	UINT	0xffff	
..... Code Protect 00800-...	Bit 64	Disabled	
..... Code Protect 02000-...	Bit 65	Disabled	
..... Code Protect 04000-...	Bit 66	Disabled	
..... Code Protect 06000-...	Bit 67	Disabled	
..... Data EE Read Protect	Bit 79	Disabled	
..... Code Protect Boot	Bit 78	Disabled	
0x6	UINT	0xffff	
..... Table Write Protect ...	Bit 80	Disabled	
..... Table Write Protect ...	Bit 81	Disabled	
..... Table Write Protect ...	Bit 82	Disabled	
..... Table Write Protect ...	Bit 83	Disabled	
..... Data EE Write Protect	Bit 95	Disabled	
..... Table Write Protect ...	Bit 94	Disabled	
..... Config. Write Protect	Bit 93	Disabled	
0x7	UINT	0xffff	
..... Table Read Protect ...	Bit 96	Disabled	
..... Table Read Protect ...	Bit 97	Disabled	
..... Table Read Protect ...	Bit 98	Disabled	
..... Table Read Protect ...	Bit 99	Disabled	
..... Table Read Protect ...	Bit 110	Disabled	