

Kvaser Leaf Installation Guide



Device	Product number
Kvaser Leaf Light HS	00241-8
Kvaser Leaf SemiPro LS	00260-9
Kvaser Leaf SemiPro HS	00242-5
Kvaser Leaf SemiPro SWC	00263-0
Kvaser Leaf Professional LS	00261-6
Kvaser Leaf Professional HS	00243-2
Kvaser Leaf Professional SWC	00264-7
Kvaser Leaf Professional LIN	00269-2

This manual was last updated on Monday, 04 July 2005



Table of Contents

1	INTRODUCTION.....	3
1.1	HARDWARE REQUIREMENTS.....	3
1.2	SOFTWARE REQUIREMENTS.....	3
1.3	UPDATING AN EXISTING INSTALLATION	3
2	DRIVER INSTALLATION.....	4
3	HARDWARE INSTALLATION	8
4	INSTALLATION VERIFICATION	10
5	SUPPORT	11
5.1	FIRMWARE UPDATE.....	11
5.2	DRIVER UPDATE.....	11
6	DISCLAIMER.....	12



1 Introduction

This guide describes how to install the Kvaser Leaf interface under Windows XP. The information given here is also valid for Windows 98, Windows 2000 and Windows Server 2003, since the steps are basically the same.

The driver installation packages and device firmware updates are available on our web site¹ and also on the Kvaser CD, which you received together with the hardware when you purchased it.

Since the hardware is essentially the same this guide will refer to the devices as just Kvaser Leaf.

Please read this entire document before installing or upgrading the device or its driver routines.

1.1 Hardware requirements

You will need

- An IBM compatible PC, Pentium or higher, and
- A USB host controller, supported by the version of Windows you are using, with a free port.

1.2 Software requirements

Before installing the drivers, you should install the latest service pack for the OS you are using.

We provide separate installation packages for the following operating systems. Each package contains the drivers for all our hardware on the OS in question; see Table 1.

Operating system	Package name
Windows 2000, Windows XP and Windows Server 2003	kvaser_drivers_w2k_xp.exe
Windows 98, Windows ME	kvaser_drivers_w98.exe

Table 1: Driver installation packages

1.3 Updating an existing installation

If your driver installation has become corrupt for some reason, we recommend that you **remove** the drivers completely, and then reinstall them again.

If you are upgrading from an old version (older than CANLIB 3.4, released in May 2003), we also recommend that you first completely **remove** the old drivers, and then install the new version.

If you are upgrading from a comparably new driver (at least version 3.4), you can install the new driver without uninstalling the old version.

¹ <http://www.kvaser.com>

2 Driver installation

- Run the driver installation program (see Table 1.) On Windows 2000, XP and Server 2003, you must have Administrator's rights.
- **View README file?** When the installation program has loaded, you are asked if you wish to read the README file. We recommend that you do so, since it contains information that probably is useful for you.

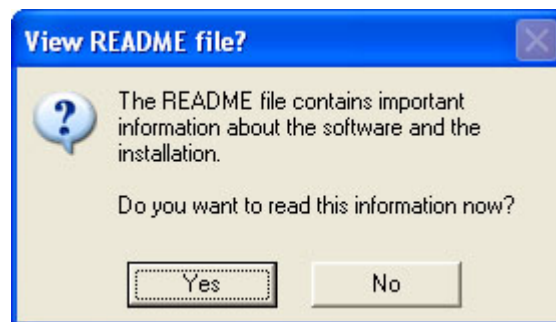


Figure 1: View the README file

- **Welcome.** At this point, you are ready to set up the installation on your computer. Press the "Next" button to continue.

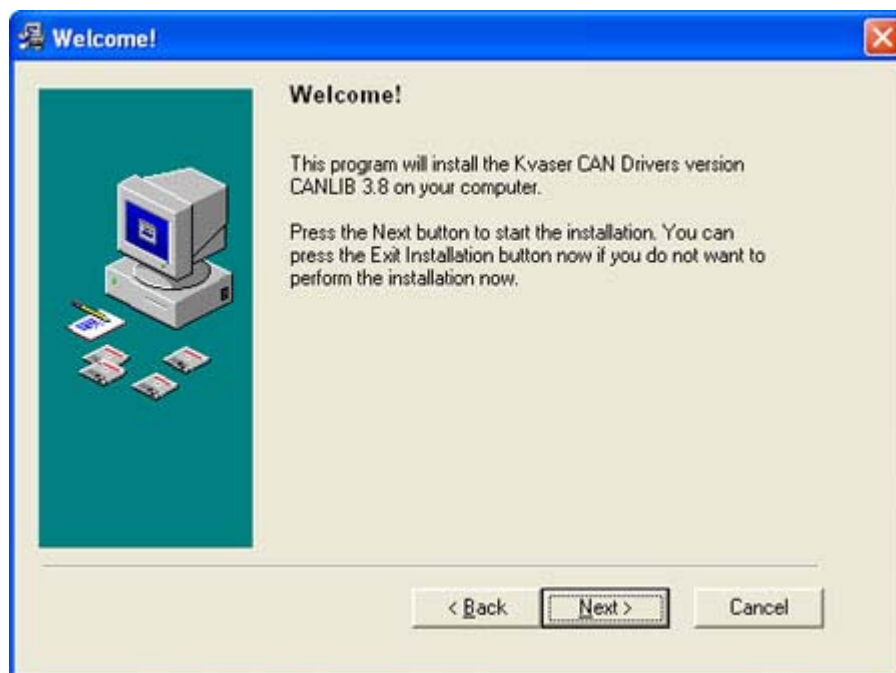


Figure 2: The welcome screen

- **Select Destination Directory.** We recommend that you keep the default value. Press the "Next" button to continue.

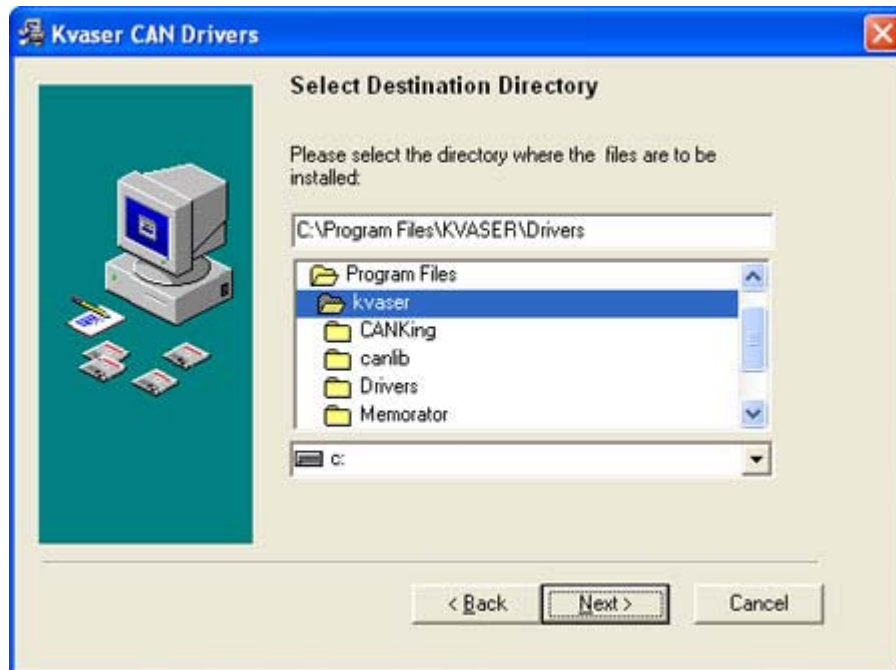


Figure 3: Select destination directory

- **Select Start Menu Group.** We recommend that you keep the default value. Press the "Next" button to continue.



Figure 4: Select Start Menu group

- **Ready to install.** The installation program has now gathered all information it needs and it is ready to install the drivers for all your Kvaser hardware. Press the "Next" button to continue.



Figure 5: Ready to install

- **Copying and registering files.** Wait a few moments while the driver files are being copied and registered with Windows. This will normally take about 10 seconds, but could take as long as a few minutes. Do not press the "Cancel " button.

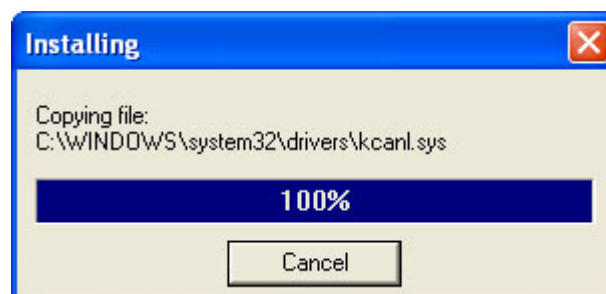


Figure 6: Copying files

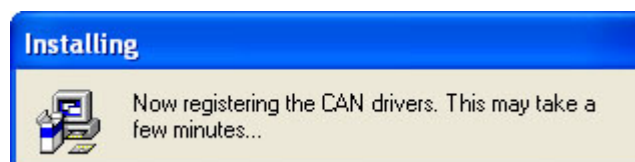


Figure 7: Registering the drivers

- **Installation Complete.** If the installation is completed successfully, the following message pops up. Press the "OK" button to continue.



Figure 8: Installation complete

The driver installation is now complete. You may now proceed with the hardware installation as described in chapter 3.

3 Hardware installation

You need to install your Kvaser Leaf once (but only once) for **each** USB port you want to use on your computer. This is a design feature of Windows.

- **Drivers installed?** Install the Kvaser Leaf drivers if you have not already done so.
- **Plug in the hardware.** Plug in your Kvaser Leaf into a free USB port on your PC (the computer does not need to be turned off).
- **The Welcome dialog.** In a few seconds the dialog in Figure 9 will pop up. You do not need to insert the Kvaser CD although the dialog says you should. Instead, just select "Install the software automatically", and then press the "Next" button. **Note:** You must have Administrator's rights to do this, or the operation will fail. In Windows XP, Service Pack 2 or later, you will be asked if you want to connect to Windows Update. Here you should answer "No, not this time" and then press the "Next" button. Connecting to Windows Update is harmless but can take a long time.

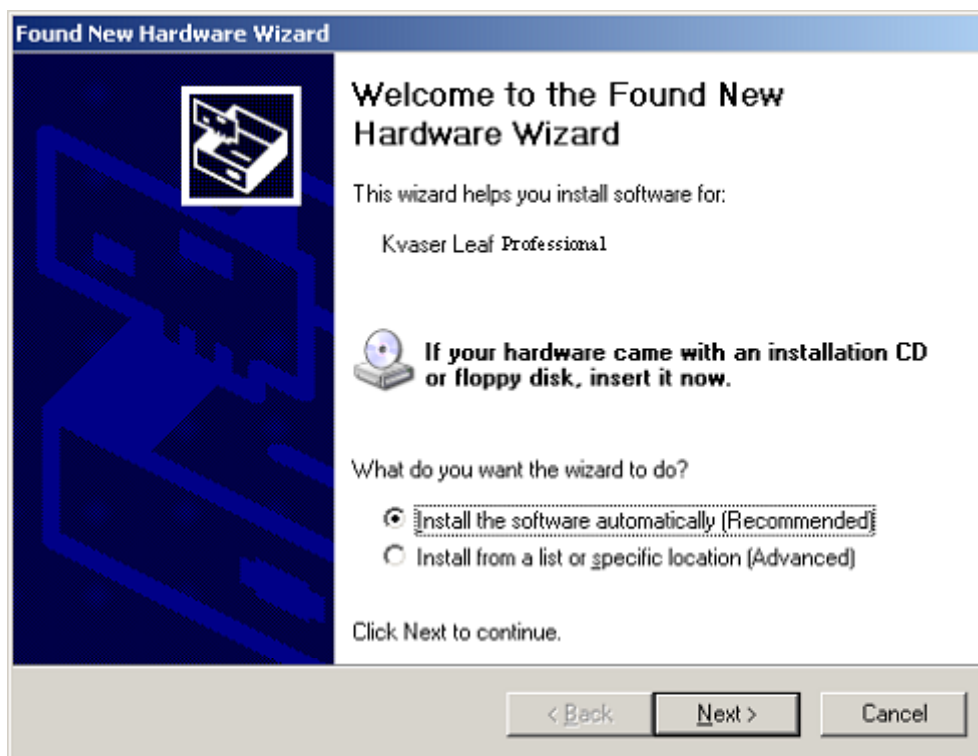


Figure 9: The Found New Hardware dialog

- **Installing.** In the next dialog the software is being installed. Press “Next” when the installation is complete.

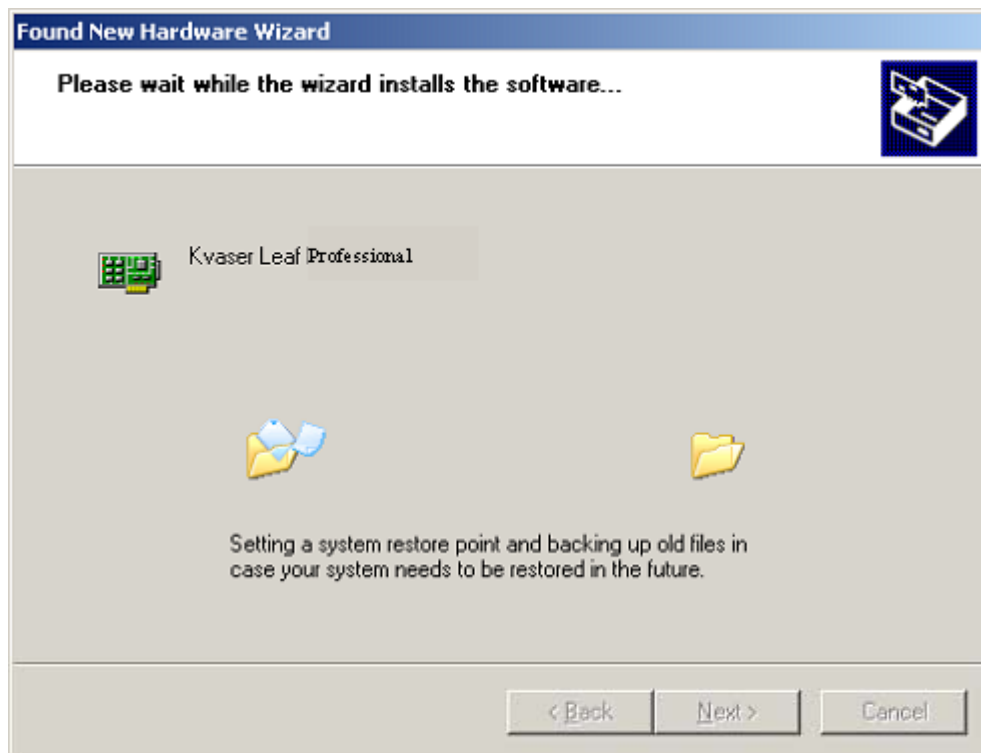


Figure 10: The hardware is being installed

- **Finish.** The installation is now complete. Press “Finish”.

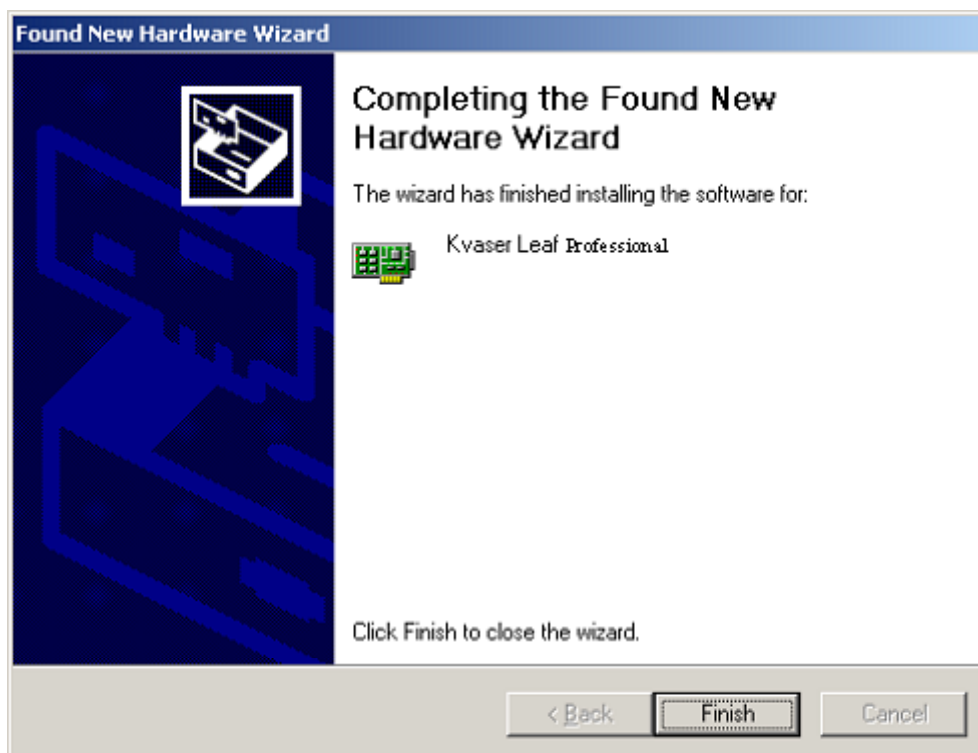


Figure 11: Hardware installation completed

4 Installation verification

You can perform the steps described below to verify that your Kvaser hardware is properly installed and communicates with its device driver.

Open the Control Panel. There you will find an icon labelled Kvaser Hardware. It looks like this:



Figure 12: The Kvaser Hardware icon

Note for users of Windows XP and Server 2003: If you have enabled the "Category View" (which is the default) in the Control Panel, you will find the icon in the "Printers and Other Hardware" category. As an alternative to the Category View, you may want to click on the link "Switch to Classic View" on the left panel in the Control Panel window. In the Classic View, all icons are visible at the same time.

Open the Kvaser Hardware program. Double-click on the abovementioned icon. You should see a window like the one shown below. This program handles all Kvaser Hardware that is connected to the computer. The virtual drivers are also included. Clicking on a device channel opens up a panel with more detailed information, for example serial number, firmware revision, EAN number, etc.

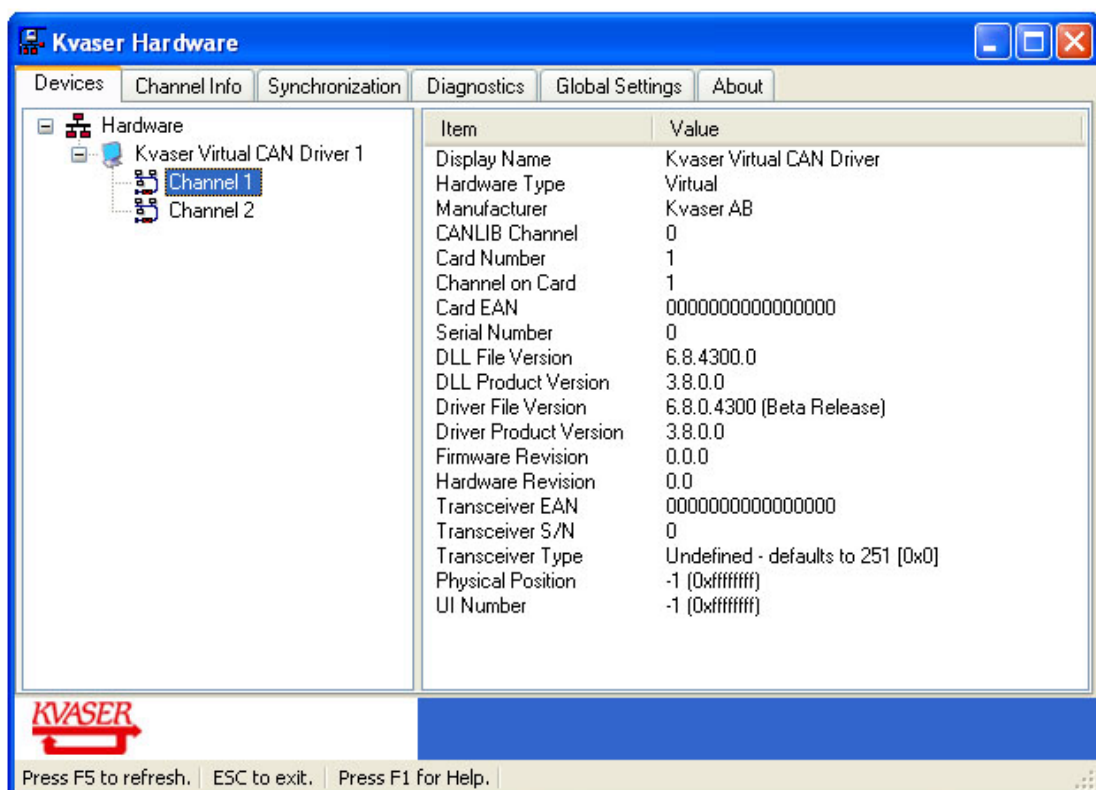


Figure 13: The "Kvaser Hardware" program

If **Kvaser Hardware** displays information for a particular hardware device, it means that the basic communication between the hardware and the device driver is OK.

5 Support

You may want to visit our homepage <http://www.kvaser.com> to find frequently asked questions, troubleshooting tips, and other helpful information.

Support email:

support@kvaser.com

5.1 Firmware Update

Firmware updates and upgrade instructions can be found at <http://www.kvaser.com/download/>. Use "Kvaser Hardware" to see the present firmware version of your Kvaser Leaf.

5.2 Driver Update

Driver updates and upgrade instructions can be found at <http://www.kvaser.com/download/>. Use "Kvaser Hardware" to see the present firmware version of your Kvaser Leaf.

6 Disclaimer

© Copyright 2005 Kvaser AB

This document may not be reproduced without our written permission. Infringement will render the user liable to prosecution.

We believe that the information contained herein was accurate in all respects at the time of printing. KVASER AB cannot, however, assume any responsibility for errors or omissions in this text. Please also note that the information in this document is subject to change without notice and should not be construed as a commitment on the part of KVASER AB.